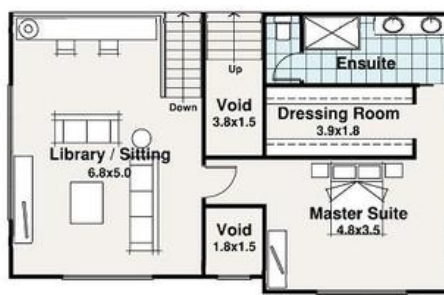




Hendra

Hotham



Hotham Design

Spacious 3 bedroom home packed with features. Large open planned kitchen, meals and family area. Games room and bar make home perfect for entertaining. Top level master suite and sitting area make ideal retreat. Alfresco area perfect for entertaining. Double lock up garage.

All council building fees included. Colorbond custom orb roof. Blinds and screens to all openable windows. * Security screens to front and alfresco doors. * 20mm engineered stone bench tops and 600mm appliances. * Feature garden at front of property. * Turf to front and rear yards. *(exclu. council footpath) Metal letterbox and clothesline included. Fencing with property access gates. * 6 Star Energy Efficiency Rating Report.

Full turn key house package, ready for you to move in. **Standard Inclusions** - Your Complete Package. **7 Facades suitable**

Ground Floor: 182.89sqm First Floor: 84.92sqm Garage: 44.26sqm Alfresco: 15.39sqm Porch: 1.69sqm Width: 14.10m Depth: 21.22m TOTAL: 329.15sqm

Note - Dimensions, photographs, sketches and inclusions are approximate and may include optional features. Price is current as of advertised date and is subject to soil test, BAL and contour survey. Facade is an indication only and may include some upgraded features not included in the package price such as render, feature colours and additional plants. Internal photos are from a display home and may include upgraded fittings and fixtures. Covenant approval may apply. *Conditions Apply. Home to be built. Speak with your consultant for more details. QBCC #1033989 ABN 29 104 825 667 Brighton facade shown.

The above information provided has been furnished to us by the vendor/s. We have not verified whether or not that information is accurate and do not have any belief in one way or the other in its accuracy. We do not accept any responsibility to any person for its accuracy and do no more than pass it on. All interested parties should make and rely upon their own inquiries in order to determine whether or not this information is in fact accurate.

3 Beds 2 Bath 2 Car

Price Hotham Design - Full Turn Key - POA

Property Type residential

Property ID 313

Land Area 0 m2

Floor Area 329 m2

Agent Details

Rhys Auliff - 07 3852 6688

Office Details

OneBuild Homes
Unit 4 26 Navigator Pl Hendra QLD 4011
Australia
07 3852 6688

